



GMT MONTHLY MEMBERSHIP PROGRESS REPORT

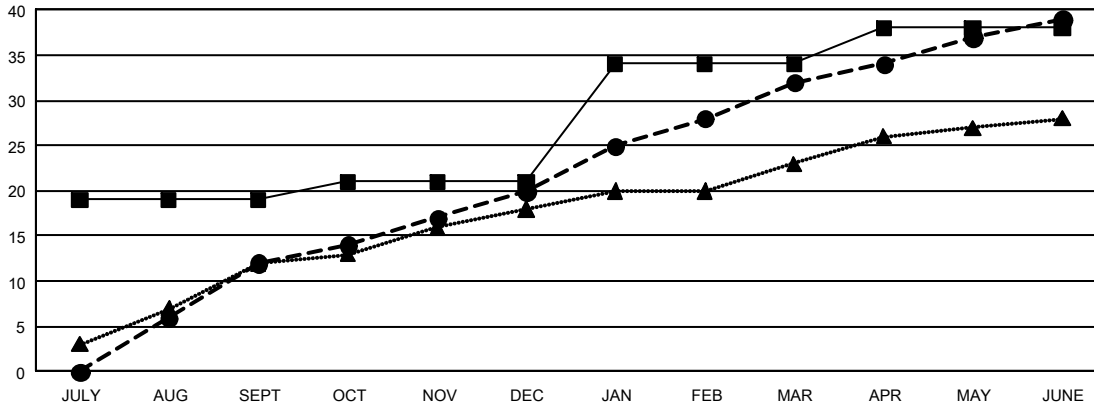
GAT Constitutional Area 5 - Korea

Results as of: 6/30/2024

REPORT DOES NOT INCLUDE CLUBS IN UNDISTRICTED AREAS.

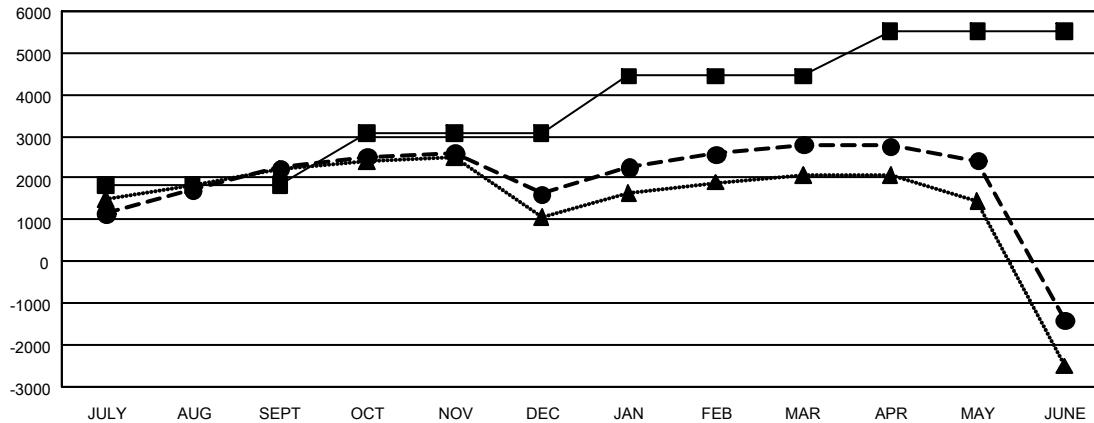
Clubs				Members			
RESULTS FOR 2023-2024				RESULTS FOR 2023-2024			
QUARTER	NEW CLUB GOAL	NEW CLUBS	DROPPED CLUBS	QUARTER	MEMBER GROWTH NET GOAL	MEMBER GROWTH ACTUAL	DROPPED MEMBERS ACTUAL (including transfers)
JULY/AUG/SEPT	19	12	9	JULY/AUG/SEPT	1,828	4,741	2,248
OCT/NOV/DEC	2	8	14	OCT/NOV/DEC	1,256	2,235	2,739
JAN/FEB/MAR	13	12	2	JAN/FEB/MAR	1,363	2,570	1,251
APR/MAY/JUNE	4	7	25	APR/MAY/JUNE	1,085	1,885	5,911

GOALS AND ACTUAL NEW CLUBS CUMULATIVE



- CURRENT YEAR GOALS FOR NEW CLUBS
- CURRENT YEAR ACTUAL NEW CLUBS
- ▲ LAST YEAR ACTUAL NEW CLUBS

GOALS AND ACTUAL MEMBERS CUMULATIVE



- MEMBER GROWTH NET GOAL
- MEMBER GROWTH ACTUAL
- ▲ LAST YEAR MEMBERSHIP ACTUAL

DROPPED CLUBS: 47	1,700 CLUBS OF 2,050 ADDED 1 OR MORE NEW MEMBERS	GENDER DISTRIBUTION
		MALE 51,064 (73.90%)
		FEMALE 18,030 (26.09%)
DROPPED MEMBERS	CLICK HERE FOR CUMULATIVE MEMBERSHIP DATA	TOTAL FAMILY UNIT MEMBERS 3,729
DECEASED 245		FAMILY MEMBERS PAYING HALF DUES 2,154
CLUB CANCELLED 605		
OTHER 11,257		
TOTAL 12,107		